



MODEL PORTFOLIO



Aggressive

This portfolio is a model portfolio for those who are seeking the highest rate of return possible. By doing this, they are accepting quite a bit of risk. And sometimes, the risk even outweighs the return. This portfolio has a greater allocation towards thematic and midcap funds as these funds are generally expected to deliver higher returns. However, they may a few times fail to deliver higher returns.

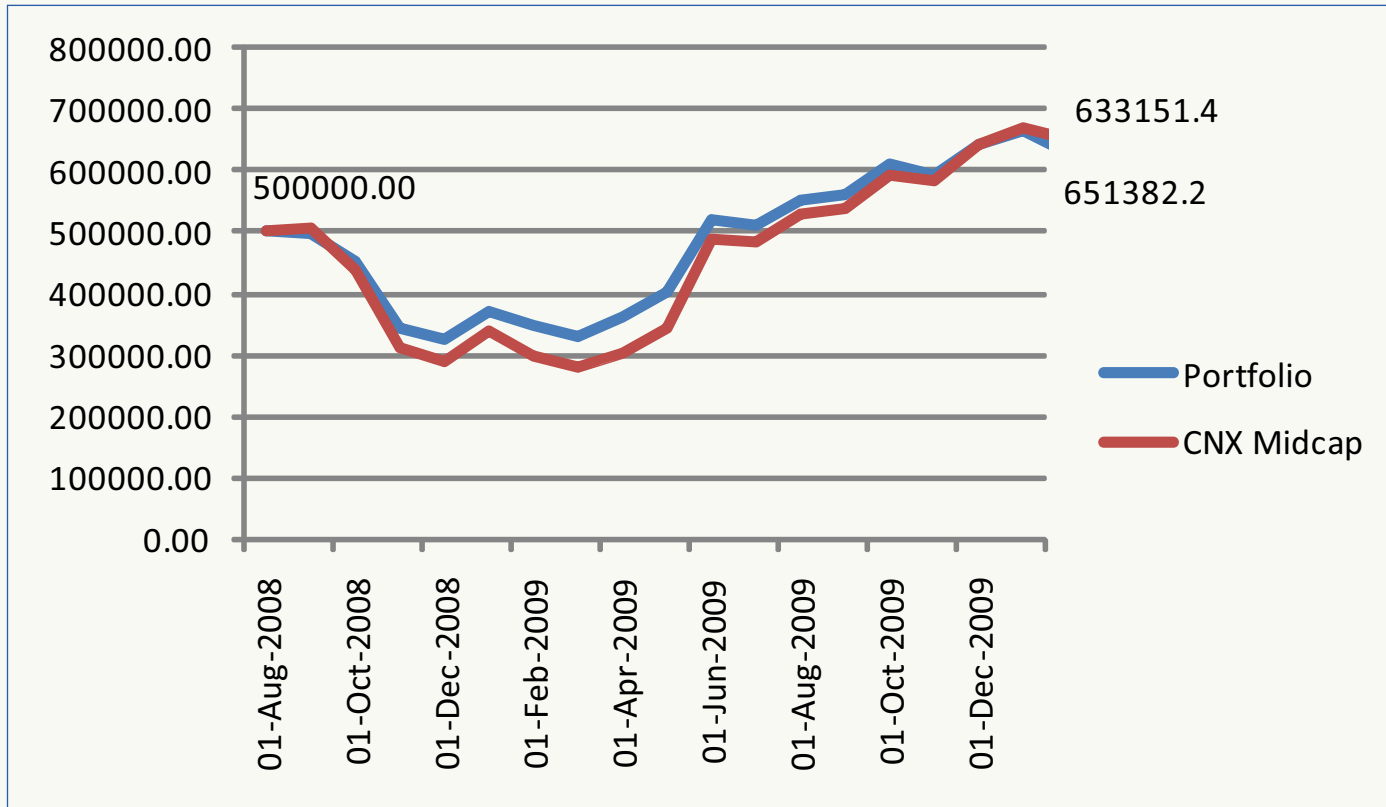
This portfolio has delivered a CAGR of 18.11% while the benchmark index has delivered 18.41%.

Investment Amount: Rs.5 Lacs.

| Portfolio Structure | |
|---------------------|------------|
| Largecap | 15 |
| Midcap | 20 |
| Multicap | 20 |
| Opportunities | 10 |
| Thematic | 25 |
| Dividend Yield | 0 |
| Value Style | 10 |
| Special Situations | 0 |
| | 100 |

| Scheme Name | Latest NAV(Rs) | Absolute | | | | CAGR | | |
|-----------------------------|----------------|----------|----------|----------|----------|---------|---------|-----------------|
| | | 1 Month | 3 Months | 6 Months | 1 Year | 3 Years | 5 Years | SINCE INCEPTION |
| DSPBR Top 100 Equity-Reg(G) | 87.5930 | 2.1207 | -2.8536 | 10.1452 | 81.3783 | 17.3412 | 25.9397 | 37.4052 |
| ICICI Pru Discovery(G) | 41.4100 | 1.3213 | 6.7268 | 21.9017 | 169.4209 | 18.7776 | 24.9465 | 29.2071 |
| ICICI Pru Dynamic(G) | 91.4419 | 1.7767 | 3.0375 | 17.7171 | 99.3649 | 13.5286 | 27.2583 | 35.2786 |
| ICICI Pru Infrastructure(G) | 27.8400 | 1.3469 | -1.4513 | 6.5850 | 76.8742 | 17.3724 | | 24.5018 |
| IDFC Imperial Equity-B(G) | 15.2152 | 3.3143 | 0.5532 | 9.7485 | | | | 56.0519 |
| Kotak Opportunities(G) | 41.1320 | 2.0746 | -0.9488 | 11.5232 | 98.5423 | 14.5678 | 25.7707 | 29.4530 |
| Reliance Banking(G) | 75.4029 | 3.3471 | -4.0084 | 19.9577 | 133.2101 | 28.9031 | 24.3455 | 34.6699 |
| Reliance Growth-Ret(G) | 421.2004 | 0.9966 | 2.0448 | 16.5594 | 121.1411 | 17.4921 | 28.2189 | 29.7067 |
| Tata Equity P/E(G) | 42.4087 | 0.2356 | -0.7905 | 15.9915 | 127.0237 | 20.8436 | 24.1128 | 28.9827 |
| UTI Equity(G) | 46.9200 | 1.6244 | -2.0664 | 13.2513 | 92.4528 | 15.5123 | | 18.4292 |

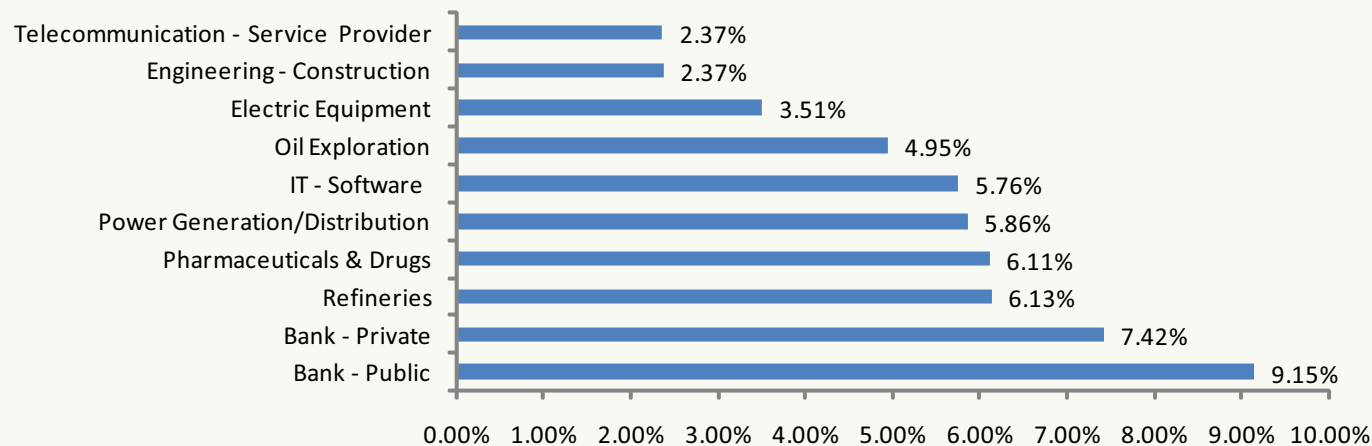
Aggressive - Growth Curve



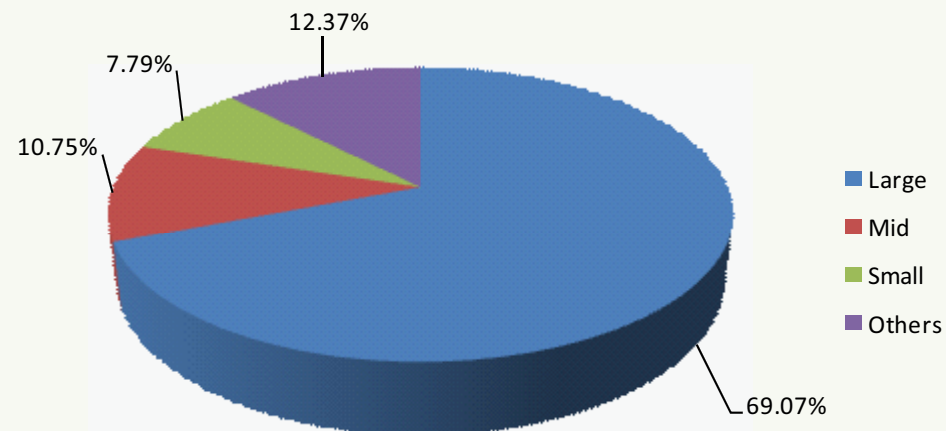
| | |
|---------------|--------|
| CAGR Fund | 18.11% |
| CAGR Index | 18.41% |
| Sortino Fund | 0.1538 |
| Sortino Index | 0.1654 |

Aggressive

Top 10 Sectors exposure



Market Cap



Moderately Aggressive

These are investors who are investing and are willing to accept a little more risk than a conservative investor in exchange for a higher rate of return.

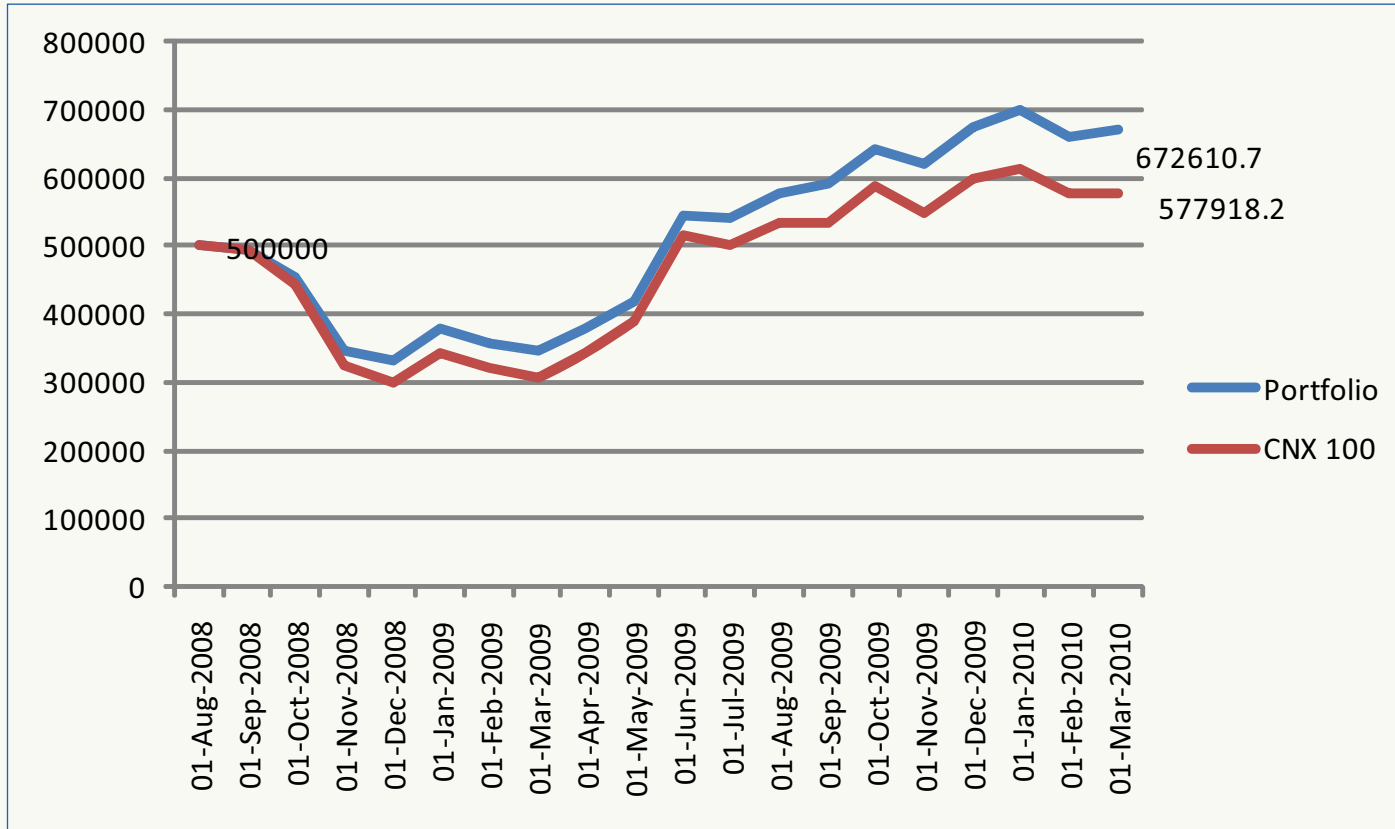
This portfolio has delivered a CAGR of 10.64% while the benchmark index has delivered 4.08%.

Investment Amount: Rs.5 Lacs.

| Portfolio Structure | |
|---------------------|------------|
| Largecap | 20 |
| Midcap | 15 |
| Multicap | 25 |
| Opportunities | 15 |
| Thematic | 10 |
| Dividend Yield | 15 |
| Value Style | 0 |
| Special Situations | 0 |
| | 100 |

| Scheme Name | Latest NAV(Rs) | Absolute | | | | CAGR | | |
|---------------------------------|----------------|----------|----------|----------|----------|---------|---------|-----------------|
| | | 1 Month | 3 Months | 6 Months | 1 Year | 3 Years | 5 Years | SINCE INCEPTION |
| Birla SL Dividend Yield Plus(G) | 69.6100 | 2.2774 | 0.9133 | 15.2483 | 104.6149 | 20.1926 | 19.4757 | 31.6505 |
| DSPBR World Gold-Reg(G) | 14.3870 | 3.8758 | -15.7847 | 8.8976 | 29.9603 | | | 9.5646 |
| HDFC Top 200(G) | 176.5540 | 2.8474 | -1.3064 | 12.7831 | 114.7519 | 19.8951 | 27.1211 | 23.6949 |
| ICICI Pru Dynamic(G) | 91.4419 | 1.7767 | 3.0375 | 17.7171 | 99.3649 | 13.5286 | 27.2583 | 35.2786 |
| ICICI Pru Focused Equity-Ret(G) | 13.5800 | 3.7433 | 0.7418 | 15.1824 | 101.4837 | | | 18.7725 |
| Kotak Opportunities(G) | 41.1320 | 2.0746 | -0.9488 | 11.5232 | 98.5423 | 14.5678 | 25.7707 | 29.4530 |
| Reliance Growth-Ret(G) | 421.2004 | 0.9966 | 2.0448 | 16.5594 | 121.1411 | 17.4921 | 28.2189 | 29.7067 |
| Reliance NRI Equity(G) | 34.0648 | 2.1537 | -0.5111 | 11.1279 | 118.0817 | 13.8488 | 23.8351 | 25.9863 |
| UTI Dividend Yield(G) | 27.1100 | 3.2762 | 1.5736 | 20.1152 | 93.0912 | 20.7244 | | 23.2409 |

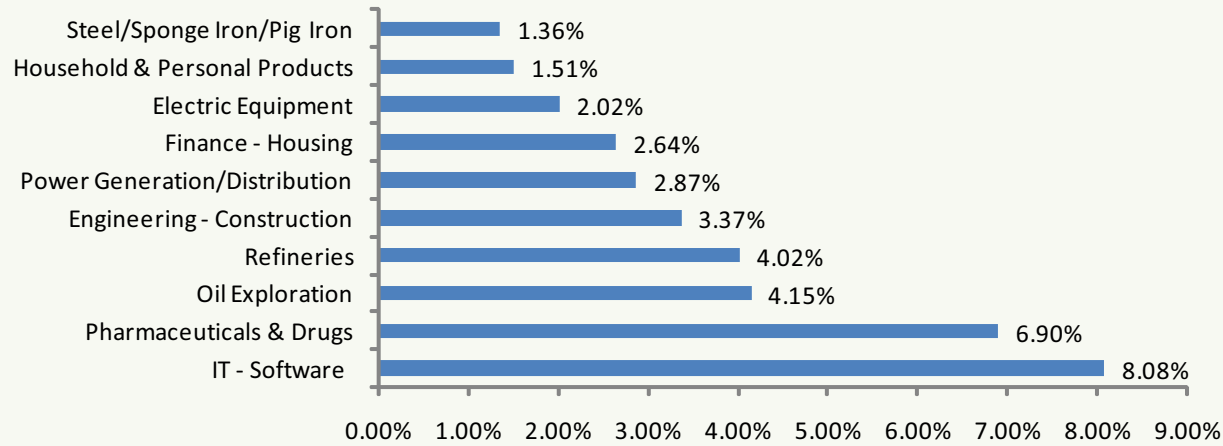
Moderately Aggressive - Growth Curve



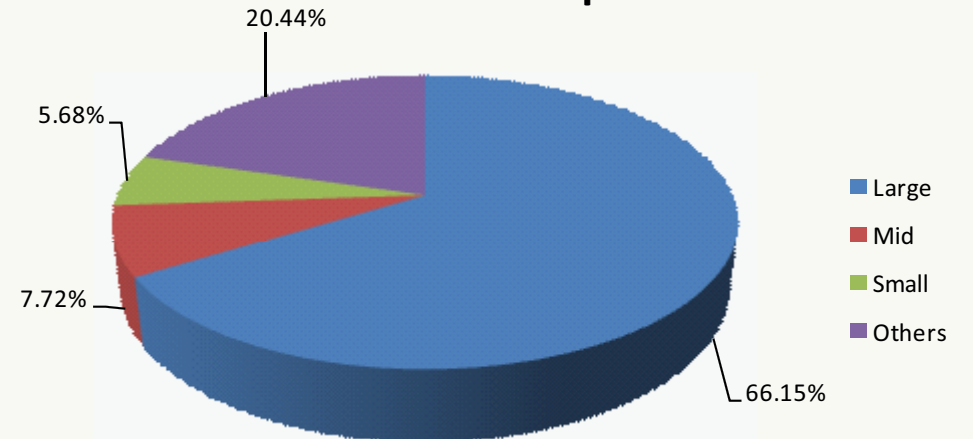
| | |
|---------------|--------|
| CAGR Fund | 10.64% |
| CAGR Index | 4.08% |
| Sortino Fund | 0.7886 |
| Sortino Index | 0.4255 |

Moderately Aggressive

Top 10 Sectors exposure



Market Cap



Conservative

This portfolio is best suited for those who want to incur minimal risk when they invest. This leads to a greater allocation in to largecap stocks as these stocks are considered be low risk equities.

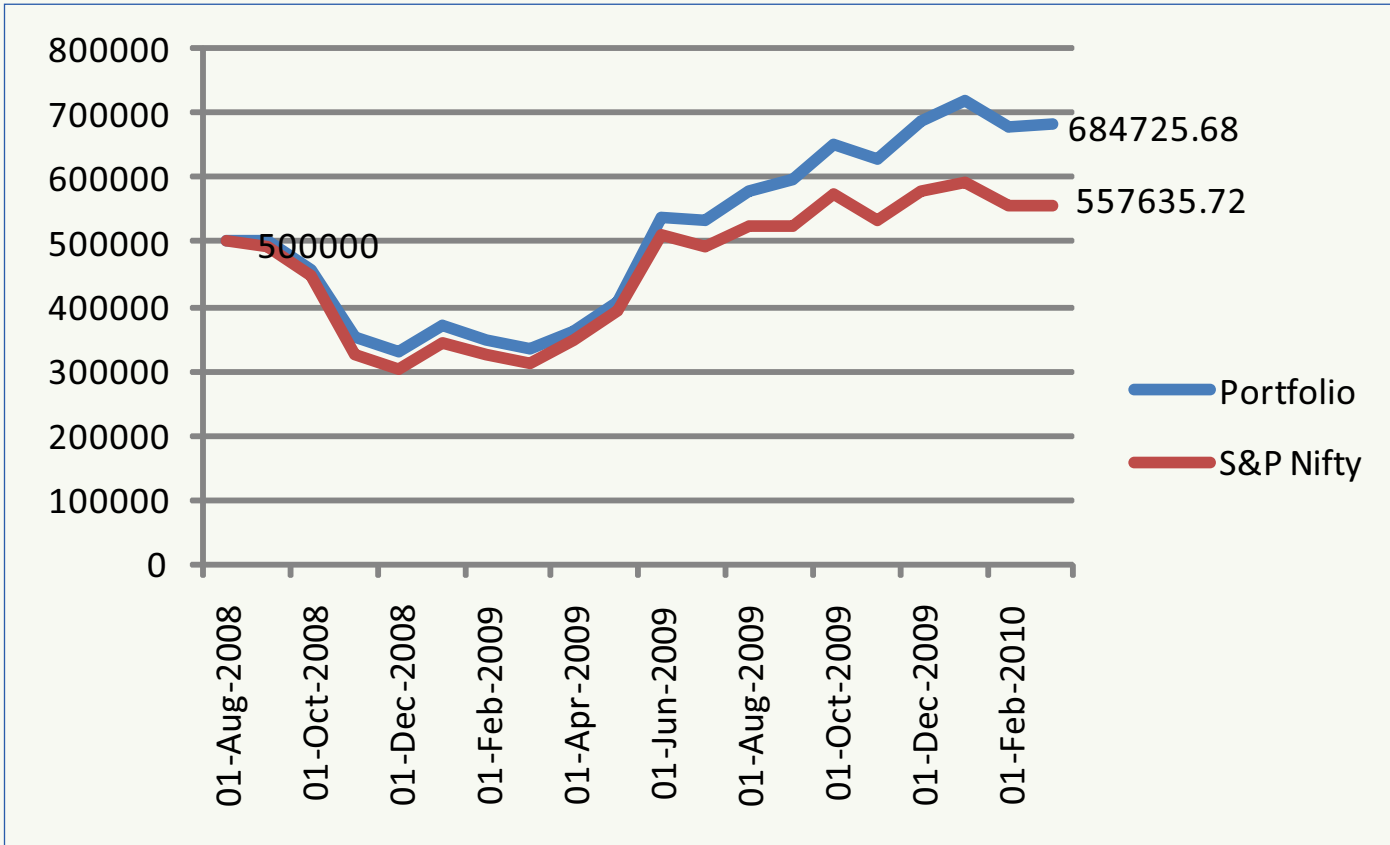
This portfolio has delivered a CAGR of 20.26% while the benchmark index has delivered 9.44%.

Investment Amount: Rs.5 Lacs.

| Portfolio Structure | |
|---------------------|------------|
| Largecap | 30 |
| Midcap | 10 |
| Multicap | 20 |
| Opportunities | 15 |
| Thematic | 0 |
| Dividend Yield | 15 |
| Value Style | 10 |
| Special Situations | 0 |
| | 100 |

| Scheme Name | Latest NAV(Rs) | Absolute | | | | CAGR | | |
|---------------------------------|----------------|----------|----------|----------|----------|---------|---------|-----------------|
| | | 1 Month | 3 Months | 6 Months | 1 Year | 3 Years | 5 Years | SINCE INCEPTION |
| Birla SL Dividend Yield Plus(G) | 69.6100 | 2.2774 | 0.9133 | 15.2483 | 104.6149 | 20.1926 | 19.4757 | 31.6505 |
| Birla SL Midcap-A(G) | 100.7400 | -0.0099 | -1.3803 | 17.0987 | 149.6654 | 18.1451 | 25.3593 | 36.7292 |
| DSPBR Equity-Reg(G) | 14.1340 | 1.2029 | -0.8905 | 13.9655 | 96.7702 | | | 13.8027 |
| DSPBR Top 100 Equity-Reg(G) | 87.5930 | 2.1207 | -2.8536 | 10.1452 | 81.3783 | 17.3412 | 25.9397 | 37.4052 |
| ICICI Pru Focused Equity-Ret(G) | 13.5800 | 3.7433 | 0.7418 | 15.1824 | 101.4837 | | | 18.7725 |
| Reliance NRI Equity(G) | 34.0648 | 2.1537 | -0.5111 | 11.1279 | 118.0817 | 13.8488 | 23.8351 | 25.9863 |
| Tata Equity Opportunities(G) | 76.4814 | 1.0557 | 0.8991 | 16.0251 | 117.2502 | 12.1790 | 21.2289 | 15.9457 |
| Tata Equity P/E(G) | 42.4087 | 0.2356 | -0.7905 | 15.9915 | 127.0237 | 20.8436 | 24.1128 | 28.9827 |
| UTI Dividend Yield(G) | 27.1100 | 3.2762 | 1.5736 | 20.1152 | 93.0912 | 20.7244 | | 23.2409 |

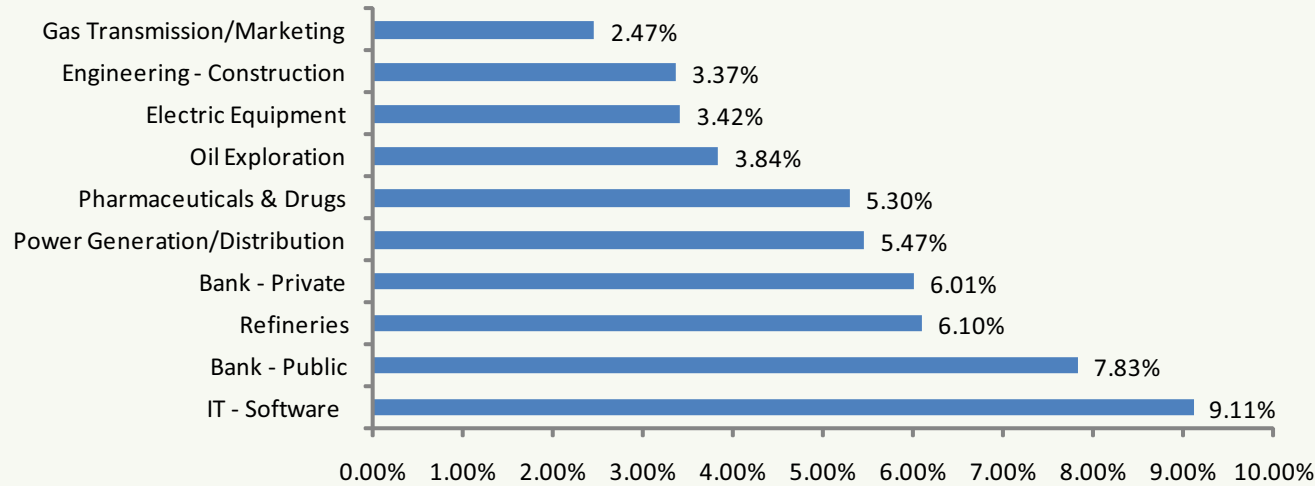
Conservative - Growth Curve



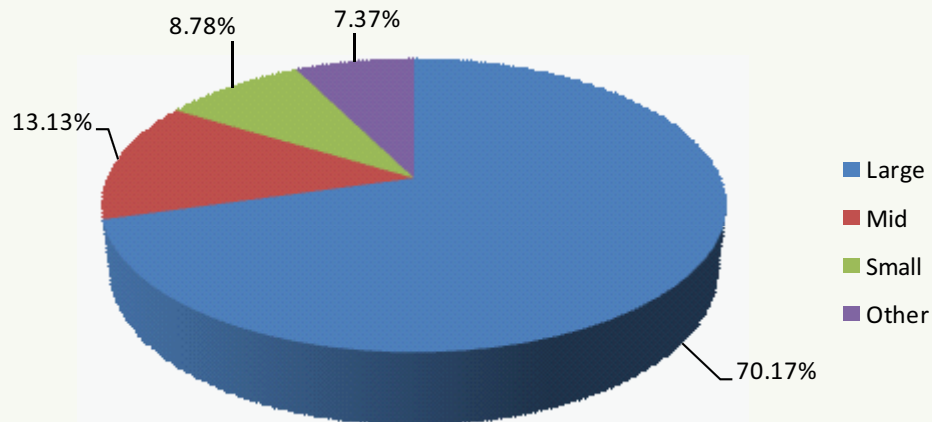
| | |
|---------------|--------|
| CAGR Fund | 20.26% |
| CAGR Index | 9.44% |
| Sortino Fund | 0.8375 |
| Sortino Index | 0.3656 |

Conservative

Top 10 Sectors exposure



Market Cap



Disclaimer

The information and views presented in this report are prepared by Karvy Stock Broking Limited. The information contained herein is based on our analysis and upon sources that we consider reliable. We, however, do not vouch for the accuracy or the completeness thereof. This material is for personal information and we are not responsible for any loss incurred based upon it. While acting upon any information or analysis mentioned in this report, investors may please note that neither Karvy nor Karvy Stock Broking nor any person connected with any associate companies of Karvy accepts any liability arising from the use of this information and views mentioned in this document.

This report is intended for a restricted audience and we are not soliciting any action based on it.