

Global Index Trends

Index	Levels	Value	Change (%)
SGX Nifty*	6210.50	-42.50	-0.68
Dow Jones	15739.43	-104.10	-0.66
NASDAQ	3998.40	-5.41	-0.14
S&P 500	1103.27	1.77	0.16
FTSE 100	6445.25	-62.47	-0.96
Nikkei 225*	15418.42	76.60	0.50
Hang Seng*	23177.52	-40.60	-0.17

Source: Bloomberg

(*Prices as of 8:00 am IST)

Market Trend

Time Frame	Trend
Daily	Bearish
Weekly	Sideways
Monthly	Sideways

Institutional Activity

Category	Segment	Net Value*
FIIIs	CM	187.81
DIIIs	CM	-354.85

Source: NSE India

CM = Cash Market

(* Rs in Cr.)

Commodities Futures

	Value	Change (%)
Gold (\$/oz)	1228.20	0.16
Silver (\$/oz)	19.45	-0.74
Crude oil (\$/bbl)	97.48	-0.02

Source: Bloomberg

Nifty: Top Gainers & Losers

Gainers		Losers	
TATAPOWER	4.07	TATAMOTORS	-4.69
RANBAXY	1.47	INDUSINDBK	-3.52
HDFC	0.95	AMBUJACEM	-3.43
JPASSOCIAT	0.84	ONGC	-2.95
LUPIN	0.51	COALINDIA	-2.79

Source: NSE India

Intra-day Recommendations

Scrip Code	Act	Entry	SL	Tgt
RANBAXY	L	Above 430	426	437
TATAPOWER	L	Above 90	89	92.50
TATAMOTORS	S	Below 358	362	351
BAJAJ-AUTO	S	Below 1940	1960	1905
LICHSGFIN	S	200-201	203	195

Note: Act=Action; Entry=Entry; SL=Stop loss; Tgt=Target; L= Long; S= Short

Market View

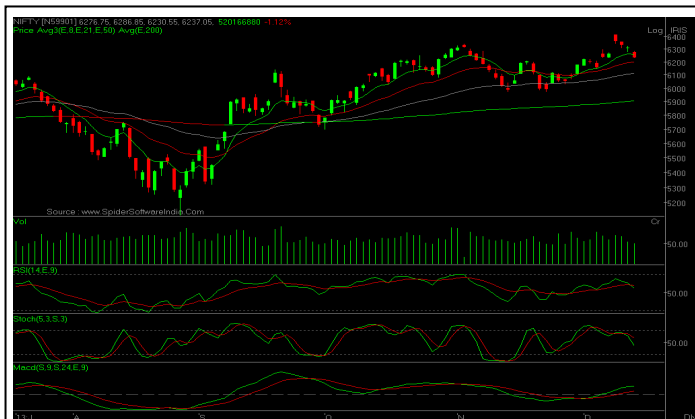
US Markets fell on Thursday as retail sales rose solidly in November, adding to signs the economy is strong enough for the Federal Reserve to begin reducing the pace of monetary stimulus. Asian markets are likely to stay under pressure on Friday as investors fret over the outlook for U.S. policy stimulus, though Japanese stocks could draw comfort from a reversal in the yen against the dollar.

For the day: Trade short in the Nifty below 6220 with the stop loss placed at 6250 for the targets of 6170 and 6150 levels.

Market Buzz

- ✓ Industrial output (IIP) contracts by 1.8%. November CPI Inflation has risen by 11.24%
- ✓ Alstom India eyes Rs 14,000-crore business
- ✓ CRISIL assigns stable outlook to Tata Sons' Rs 630-cr NCD issue
- ✓ GMR, partner win \$700-mn Philippine airport project
- ✓ Escorts may sell its auto-ancillary business
- ✓ Srei Infra seeks Sebi nod to raise Rs 100 crore
- ✓ OilMin allows RIL, GAIL to fix marketing margin
- ✓ SBI plans to hire 6 investment bankers for QIP, fixes issue price at Rs 1,783 for preferential allotment
- ✓ Coal India unlikely to meet its output target for FY'14
- ✓ USFDA issues warning to Jubilant Life over CGMP norms
- ✓ Mahindra to increase vehicle prices by up to 2% from Jan
- ✓ Heidelberg Board to consider raising Rs. 370 crore through NCDs
- ✓ Heineken is looking to further increase its stake in United Breweries
- ✓ Wall Street drops for third day on Fed QE tapering concerns
- ✓ Overseas investment by Indian firms at USD 2.28 bn in Nov
- ✓ Oil payments to Iran to be staggered: RBI

INDEX SNAPSHOT



INDEX TECHNICAL VIEW

The Nifty opened with a negative gap and traded around the 6260 levels for major part of the day but in the final hour of the trade it has fallen very sharply towards the 6230 levels. The Nifty closed at the days lows, amid selling pressure in BFSI, Metals, Oil & Gas and Auto stocks. BankNifty index has closed down by 1.26% at 11635 levels. Nifty is likely to witness further selling pressure after the worse than expected IIP and CPI Inflation data, has raised concerns over monetary tightening measures in the next RBI policy meet on 18th Dec. Nifty is likely to test the 6150 levels and could slip further towards the 6000-6050 levels in the next few trading sessions. Global markets had been under pressure ahead of the Federal Reserve meeting scheduled on December 18th to decide on the QE Tapering in the US.

Among the technical indicators, the RSI has declined to 54 from the recent high of 65 reflecting the selling pressure in the market.

Key Technical Levels and Moving Averages

	Sensex	Nifty
Support 1	20745.00	6170.00
Support 2	20590.00	6150.00
Resistance 1	21105.00	6250.00
Resistance 2	21275.00	6280.00

8-day EMA	21009.57	6257.71
21-day EMA	20837.04	6198.19
50-day EMA	20562.92	6110.58
200-day EMA	19760.10	5905.11
13-week EMA	20481.49	6088.75

Note: EMA = Exponential Moving Average

Sectoral Indices	Last Closing	Change (Points)	Change (%)
S&P BSE Mid-cap	6382.96	-13.47	-0.21
S&P BSE Small-cap	6189.90	-19.96	-0.32
S&P BSE Auto	12053.65	-270.57	-2.20
S&P BSE Bankex	13268.01	-191.27	-1.42
S&P BSE Capital Goods	10038.75	-103.55	-1.02
S&P BSE CD	5675.09	-41.78	-0.73
S&P BSE FMCG	6444.10	-42.96	-0.66
S&P BSE Healthcare	9455.76	-84.16	-0.88
S&P BSE IT	8556.72	-61.71	-0.72
S&P BSE Metal	9682.46	-134.90	-1.37
S&P BSE Oil & Gas	8659.17	-114.49	-1.30
S&P BSE PSU	6382.96	-13.47	-0.21
S&P BSE Realty	5785.12	-75.31	-1.29

Source: BSE India

Open Positional Recommendations

Scrip code	Issued Date	Action	CMP	Call Initiated	SL	Target	TF
JKCEMENT	09-Dec-13	BUY	208.7	207	198	223-225	7-10 DAYS
TALWALKARS	09-Dec-13	BUY	147	147	139	160-162	5-7 DAYS
SRF	09-Dec-13	BUY	218.8	212	205	234-235	5-7 DAYS
ABAN	09-Dec-13	BUY	352.7	357	342	388-390	4-5 DAYS
INDIACEM	09-Dec-13	BUY	59.45	60.5	57.5	65-66	5-6 DAYS
CCL	11-Dec-13	BUY	38.8	37.5	36.5	39-39.50	7-10 DAYS
FINCABLE	12-Dec-13	BUY	82.1	80.5	77	87-88	7-10 DAYS
RELINFRA	12-Dec-13	BUY	438.5	441	432	452-455	BTST

Corporate Actions

Company	Series	Ex-Date	Record Date	Purpose
HCL Technologies Limited	EQ	18-Dec-13	-	AGM / Final Dividend Rs 6.00 Per Share
Zylog Systems Limited	EQ	19-Dec-13	-	AGM

Pivot Table						
Scrip	LTP	S2	S1	Pivot Point	R1	R2
SENSEX	20925.61	20774.63	20850.12	20976.96	21052.45	21179.29
NIFTY	6237.05	6195.58	6216.32	6251.58	6272.32	6307.58
ACC	1120.00	1100.67	1110.33	1121.67	1131.33	1142.67
AMBUJACEM	182.10	178.37	180.23	183.32	185.18	188.27
ASIANPAINT	497.80	489.53	493.67	499.58	503.72	509.63
AXISBANK	1247.70	1228.63	1238.17	1253.73	1263.27	1278.83
BAJAJ-AUTO	1951.40	1931.80	1941.60	1959.80	1969.60	1987.80
BANKBARODA	682.00	667.33	674.67	680.48	687.82	693.63
BHARTIARTL	323.60	309.60	316.60	322.55	329.55	335.50
BHEL	161.25	157.78	159.52	161.88	163.62	165.98
BPCL	350.00	342.33	346.17	349.83	353.67	357.33
CAIRN	325.10	321.20	323.15	325.85	327.80	330.50
CIPLA	380.95	375.75	378.35	382.75	385.35	389.75
COALINDIA	281.00	275.07	278.03	282.97	285.93	290.87
DLF	156.20	152.07	154.13	156.52	158.58	160.97
DRREDDY	2403.40	2379.90	2391.65	2411.80	2423.55	2443.70
GAIL	345.80	338.40	342.10	345.70	349.40	353.00
GRASIM	2698.95	2665.68	2682.32	2702.53	2719.17	2739.38
HCLTECH	1180.75	1144.25	1162.50	1175.25	1193.50	1206.25
HDFC	826.95	809.28	818.12	824.33	833.17	839.38
HDFCBANK	695.20	685.37	690.28	695.42	700.33	705.47
HEROMOTOCO	2124.40	2090.50	2107.45	2135.25	2152.20	2180.00
HINDALCO	121.05	118.85	119.95	121.60	122.70	124.35
HINDUNILVR	562.75	556.38	559.57	563.83	567.02	571.28
ICICIBANK	1132.60	1111.27	1121.93	1138.97	1149.63	1166.67
IDFC	107.25	105.62	106.43	107.62	108.43	109.62
INDUSINDBK	433.60	418.57	426.08	436.72	444.23	454.87
INFY	3363.85	3328.15	3346.00	3365.85	3383.70	3403.55
ITC	316.80	311.87	314.33	318.17	320.63	324.47
JINDALSTEL	262.35	256.18	259.27	264.33	267.42	272.48
JPASSOCIAT	54.20	51.23	52.72	54.18	55.67	57.13
KOTAKBANK	765.10	750.90	758.00	764.35	771.45	777.80
LT	1065.05	1047.75	1056.40	1067.60	1076.25	1087.45
LUPIN	878.30	862.97	870.63	876.27	883.93	889.57
M&M	941.80	932.57	937.18	944.62	949.23	956.67
MARUTI	1714.80	1686.80	1700.80	1724.40	1738.40	1762.00
NMDC	139.05	135.15	137.10	139.35	141.30	143.55
NTPC	139.65	137.65	138.65	139.35	140.35	141.05
ONGC	283.30	276.27	279.78	286.27	289.78	296.27
PNB	586.20	575.33	580.77	586.88	592.32	598.43
POWERGRID	97.95	97.05	97.50	97.85	98.30	98.65
RANBAXY	429.70	420.07	424.88	429.62	434.43	439.17
RELIANCE	870.20	860.73	865.47	872.73	877.47	884.73
RELINFRA	438.50	428.33	433.42	438.03	443.12	447.73
SBIN	1777.00	1755.73	1766.37	1782.18	1792.82	1808.63
SSLT	194.60	192.43	193.52	194.78	195.87	197.13
SUNPHARMA	574.35	565.62	569.98	575.97	580.33	586.32
TATAMOTORS	360.45	349.42	354.93	364.52	370.03	379.62
TATAPOWER	89.25	80.92	85.08	88.27	92.43	95.62
TATASTEEL	412.75	408.08	410.42	413.83	416.17	419.58
TCS	2028.90	2000.43	2014.67	2039.33	2053.57	2078.23
ULTRACEMCO	1871.40	1831.13	1851.27	1880.13	1900.27	1929.13

Pivot Point: Intra-day trading tool that applies stop loss based on NSE prices.

Pivot Point: This is a trigger point for intra-day buy/sell based on the price range of the previous day, based on NSE prices.

R1(Resistance 1): First resistance over pivot point; **R2** (Resistance 2): Second resistance over R1.

S1 (Support 1): First support below pivot point; **S2** (Support 2): Second support below S1.

As per the tool, the trader should take a BUY position just above the pivot point; the stop loss should be kept at the pivot point and the first target would be R1. If R1 is crossed, then R2 becomes the next target with the stop loss at R1.

Similarly, if the price falls below the pivot point, the trader should SELL, keeping the pivot point as the stop loss and the first target as S1. If S1 is crossed, then S2 becomes the next target with the stop loss at S1.

Legends: BPP: Book part profits; BFP: Book full profits; AP: Average profits; EMA: Exponential moving average; SA: Simple average; RVS: Revised stop loss level.

KARVY RESEARCH DESK – RETAIL BROKING

JK Jain

Head Research

QUERIES & FEEDBACK

Toll-Free: 1800 425 8283

Email ID: karvycalls@karvy.com

Karvy Stock Broking Limited

“Karvy Centre”, Avenue-4, 2nd Floor, Road No: 10, Banjara Hills, Hyderabad – 500 034. India.

Tel: 91-40-23312454; Fax: 91-40-23311968

Disclaimer:

The views represented here are based purely on Technical studies/analysis and can be at odds with our Fundamental views/analysis.

The information and views expressed and presented in this report are prepared by Karvy Stock Broking Limited (Karvy). The information contained herein is based on our analysis and up on sources that we consider reliable. We, however, do not vouch for the accuracy or the completeness thereof. This material is for personal information only and we are not responsible for any loss incurred based upon any action/trade(s) there upon.

The investments discussed or recommended in this report may not be suitable for all investors. Investors must make their own investment decisions based on their specific investment objectives and financial position and using such independent advice, as they believe necessary. While acting upon any information or analysis mentioned in this report, investors may please note that neither Karvy nor any person connected with any associated companies of Karvy accepts any liability arising from the use of this information and views mentioned in this document.

The author, directors and other employees of Karvy and its affiliates may hold long or short positions in the above-mentioned companies from time to time. Every employee of Karvy and its associated companies are required to disclose their individual stock holdings and details of trades, if any, that they undertake. The team rendering corporate analysis and investment recommendations are restricted in purchasing/selling of shares or other securities till such a time this recommendation has either been displayed or has been forwarded to clients of Karvy. All employees are further restricted to place orders only through Karvy Stock Broking Ltd. The report is intended for a restricted audience and we are not soliciting any action based on it. Neither the information nor any opinion expressed herein constitutes an offer or an invitation to make an offer, to buy or sell any securities, or any options, futures nor other derivatives related to such securities.

Karvy Stock Broking Ltd. does and seeks to do business with companies covered in its research reports. As a result, investors should be aware that the firm may have a conflict of interest that could affect the objectivity of this report. Investors should consider this report as only a single factor in making their investment decision.