

**Global Index Trends**

Index	Levels	Value	Change (%)
SGX Nifty*	6050.50	13.00	0.21
Dow Jones	15440.23	-5.01	-0.03
NASDAQ	4011.55	-19.97	-0.50
S&P 500	1751.64	-3.56	-0.20
FTSE 100	6457.89	8.62	0.13
Nikkei 225*	14198.91	18.53	0.13
Hang Seng*	21371.62	102.24	0.48

Source: Bloomberg

(\*Prices as of 8:00 am IST)

**Market Trend**

Time Frame	Trend
Daily	Sideways
Weekly	Bearish
Monthly	Bearish

**Institutional Activity**

Category	Segment	Net Value*
FII's	CM	-576.20
DII's	CM	815.23

Source: NSE India

CM = Cash Market

(\* Rs in Cr.)

**Commodities Futures**

	Value	Change (%)
Gold	1258.00	-0.07
Silver	19.98	-0.08
Crude Oil	97.52	0.14

Source: Bloomberg

**Nifty: Top Gainers & Losers**

Gainers		Losers	
RANBAXY	5.75	ITC	-1.89
TATASTEEL	5.12	BHEL	-1.5
DLF	2.76	PNB	-1.22
TATAMOTORS	2.65	MARUTI	-0.84
M&M	2.61	HCLTECH	-0.78

Source: NSE India

**Intra-day Recommendations**

Scrip Code	Act	Entry	SL	Tgt
TATAMOTORS	L	353-354	350	361
LT	L	985-986	975	1005
TATASTEEL	L	359-360	355	368
MARUTI	S	Below 1600	1620	1570
HDFC	S	784-785	792	770

Note: Act=Action; Entry=Entry; SL=Stop loss; Tgt=Target; L= Long; S= Short

**Market View**

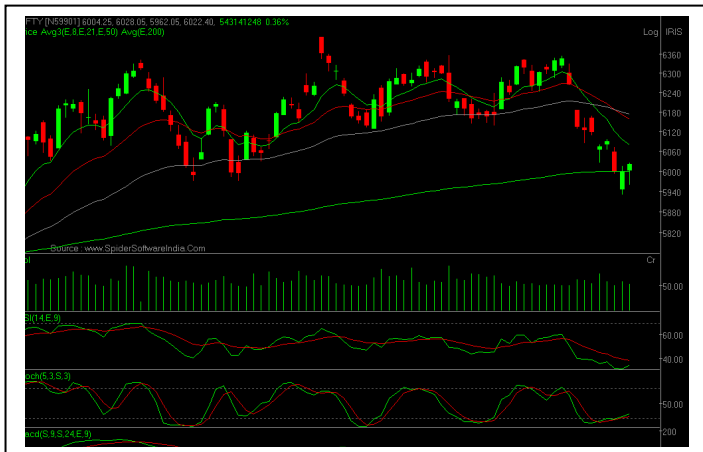
US and European markets closed on a flat note in yesterday's session amid upbeat services data and mixed labor market data in the US. Asian markets are trading on a flat to positive note amid recovery in the emerging market currencies.

**For the day:** Trade long in the Nifty on dips to 6000 levels with a stop loss placed at 5970 for the targets of 6070 and 6100.

**Market Buzz**

- ✓ Engineers India FPO opens today at a price band of Rs. 145-150 per share, retail investors get a discount of Rs. 6 on the issue price.
- ✓ GAIL India to consider mid-year dividend today
- ✓ CCEA has approved five port projects worth Rs 17,600 crore and is likely to consider Vodafone's Rs 10,141 crore FDI proposal tomorrow.
- ✓ Competition Commission of India rules out unfair trade practices by NMDC
- ✓ Muthoot Finance debt rating outlook raised from negative to stable at Crisil
- ✓ FII, NRI investment up to 26% allowed in insurance, allied activities
- ✓ India may allow FII investments in Defence sector
- ✓ Bajaj Auto set to launch indigenous car in 2 years
- ✓ SKS Microfinance to raise Rs. 400 crore
- ✓ PE fund KKR to invest \$100 million in Avantha Group
- ✓ EU drug regulator wants Ranbaxy units' status details
- ✓ Syndicate Bank launches deposit scheme offering 9.25-9.75%
- ✓ Polaris Financial Technology launches payment solution for Indian market
- ✓ Reliance Broadcast sets delisting offer floor price at Rs. 46.47 per share; offer opens Feb. 12
- ✓ Jubilant group may exit chemicals business to reduce debt
- ✓ CIDCO floats tender to find developer for Navi Mumbai Airport; GVK, GMR to participate in bid
- ✓ India services sector PMI contracts for 7th straight month
- ✓ Telecom spectrum auction Day 3: Bids worth Rs. 50,000 crore

INDEX SNAPSHOT



INDEX TECHNICAL VIEW

The Nifty in yesterday's trade opened on a flat note around 6000 levels and thereafter took strong support at 5970 levels before pulling back towards 6020 levels. The index has seen some respite from selling pressure after three gap-down openings which pushed it into oversold territory. Stocks in the broader markets saw minor pullback over the last two trading sessions. The Bank Nifty has managed to hold on to the 10000 mark on closing basis, while 10450 on the upside would prove to be a stiff resistance. The Nifty is hovering around its 200-EMA of 6000. Going forward, the index can continue its pullback towards 6070 levels since majority of the frontline stocks is heavily oversold on hourly charts. Any bounce on the index should be utilized to lighten long positions in high beta space.

Among technical indicators, the hourly RSI with a reading of 49 has pulled back from oversold territory. One can participate in this pullback as long as 5970 levels hold maintain a stop at 5950 on closing basis.

Key Technical Levels and Moving Averages

	Sensex	Nifty
Support 1	20095.00	5970.00
Support 2	19930.00	5930.00
Resistance 1	20440.00	6070.00
Resistance 2	20595.00	6100.00
8-day EMA	20479.29	6079.38
21-day EMA	20733.91	6157.49
50-day EMA	20775.80	6173.75
200-day EMA	20113.33	6000.53
13-week EMA	20261.22	6146.97

Note: EMA = Exponential Moving Average

Sectoral Indices	Last Closing	Change (Points)	Change (%)
S&P BSE Mid-cap	6310.66	28.68	0.46
S&P BSE Small-cap	6305.42	59.70	0.96
S&P BSE Auto	11602.39	186.47	1.63
S&P BSE Bankex	11695.03	35.99	0.31
S&P BSE Capital Goods	9438.87	19.41	0.21
S&P BSE CD	5542.42	-1.45	-0.03
S&P BSE FMCG	6449.01	-58.60	-0.90
S&P BSE Healthcare	10172.56	14.71	0.14
S&P BSE IT	9242.29	87.30	0.95
S&P BSE Metal	8969.33	141.59	1.60
S&P BSE Oil & Gas	8318.40	-22.39	-0.27
S&P BSE PSU	5532.85	42.47	0.77
S&P BSE Realty	1212.05	19.01	1.59

Source: BSE India

Open Positional Recommendations

Scrip code	Issued Date	Action	CMP	Call Initiated	SL	Target	TF
ITC	5-Feb-14	BUY	318.75	319	312	330-332	5-7 DAYS
ONGC	5-Feb-14	BUY	270.25	270.5	265	283-285	7-8 DAYS
ASIANPAINT	5-Feb-14	BUY	484.5	482.8	474	498-500	8-10 DAYS
UPL	5-Feb-14	BUY	190.25	192	185	205-210	8-10 DAYS
ABB	5-Feb-14	BUY	601.75	606	590	632-635	2-3DAYS
DHFL	5-Feb-14	BUY	210.4	213	207	222-225	5-7 DAYS
NAUKRI	5-Feb-14	BUY	516.05	498	475	533-535	5-7 DAYS
ABAN	5-Feb-14	BUY	524.3	526	510	548-550	BTST

Corporate Action

Company	Series	Ex-Date	Record Date	Purpose
Symphony Limited	EQ	06-Feb-14	07-Feb-14	Interim Div Rs.2/-Per Share
Power Finance Corporation Limited	EQ	07-Feb-14	10-Feb-14	Interim Dividend
Bharat Heavy Electricals Limited	EQ	07-Feb-14	10-Feb-14	Interim Dividend Rs 1.00/- Per Share

Results for the day

ACC	Aban offshore	Ambuja Cem	Auropharma	BOB	BAlrampur chini
Central Bank	GVK Power	MRF	Reliance Infra	Reliance Power	ZyduS wellness

Pivot Table						
Scrip	LTP	S2	S1	Pivot Point	R1	R2
<b>SENSEX</b>	<b>20261.03</b>	<b>19995.59</b>	<b>20128.31</b>	<b>20208.82</b>	<b>20341.54</b>	<b>20422.05</b>
<b>NIFTY</b>	<b>6022.40</b>	<b>5938.17</b>	<b>5980.28</b>	<b>6004.17</b>	<b>6046.28</b>	<b>6070.17</b>
ACC	1001.00	980.27	990.63	1001.57	1011.93	1022.87
AMBUJACEM	155.10	150.87	152.98	155.32	157.43	159.77
ASIANPAINT	484.45	464.88	474.67	479.88	489.67	494.88
AXISBANK	1123.70	1103.23	1113.47	1121.73	1131.97	1140.23
BAJAJ-AUTO	1894.70	1830.30	1862.50	1880.25	1912.45	1930.20
BANKBARODA	543.25	533.62	538.43	543.22	548.03	552.82
BHARTIARTL	314.30	308.17	311.23	314.47	317.53	320.77
BHEL	160.85	154.88	157.87	161.33	164.32	167.78
BPCL	354.60	348.93	351.77	354.83	357.67	360.73
CAIRN	324.85	322.58	323.72	325.03	326.17	327.48
CIPLA	415.15	407.78	411.47	414.18	417.87	420.58
COALINDIA	255.20	244.93	250.07	252.93	258.07	260.93
DLF	138.10	129.83	133.97	136.93	141.07	144.03
DRREDDY	2595.70	2564.63	2580.17	2595.53	2611.07	2626.43
GAIL	360.50	346.57	353.53	359.27	366.23	371.97
GRASIM	2485.65	2431.22	2458.43	2478.22	2505.43	2525.22
HCLTECH	1393.65	1355.88	1374.77	1394.38	1413.27	1432.88
HDFC	784.80	773.83	779.32	784.48	789.97	795.13
HDFCBANK	637.45	619.42	628.43	634.12	643.13	648.82
HEROMOTOCO	1988.20	1956.73	1972.47	1985.73	2001.47	2014.73
HINDALCO	104.25	99.32	101.78	103.47	105.93	107.62
HINDUNILVR	570.00	558.00	564.00	567.60	573.60	577.20
ICICIBANK	966.25	943.32	954.78	966.72	978.18	990.12
IDFC	92.60	89.20	90.90	91.95	93.65	94.70
INDUSINDBK	394.50	383.00	388.75	392.05	397.80	401.10
INFY	3581.25	3524.75	3553.00	3571.00	3599.25	3617.25
ITC	318.95	313.15	316.05	320.40	323.30	327.65
JINDALSTEL	242.40	237.43	239.92	242.58	245.07	247.73
JPASSOCIAT	38.90	37.53	38.22	38.73	39.42	39.93
KOTAKBANK	667.50	642.03	654.77	663.08	675.82	684.13
LT	985.40	969.40	977.40	982.95	990.95	996.50
LUPIN	915.45	900.88	908.17	915.58	922.87	930.28
M&M	878.35	846.78	862.57	871.78	887.57	896.78
MARUTI	1606.70	1589.63	1598.17	1610.63	1619.17	1631.63
NMDC	140.20	133.37	136.78	139.02	142.43	144.67
NTPC	132.40	125.13	128.77	130.73	134.37	136.33
ONGC	270.25	262.95	266.60	269.05	272.70	275.15
PNB	560.90	549.10	555.00	562.00	567.90	574.90
POWERGRID	96.75	93.95	95.35	96.10	97.50	98.25
RANBAXY	340.25	305.85	323.05	335.20	352.40	364.55
RELIANCE	817.25	800.62	808.93	815.22	823.53	829.82
SBIN	1521.70	1488.77	1505.23	1517.57	1534.03	1546.37
SSLT	184.70	178.70	181.70	183.50	186.50	188.30
SUNPHARMA	583.60	574.20	578.90	587.70	592.40	601.20
TATAMOTORS	355.10	332.10	343.60	351.05	362.55	370.00
TATAPOWER	72.95	71.45	72.20	72.85	73.60	74.25
TATASTEEL	359.40	337.93	348.67	354.78	365.52	371.63
TCS	2194.40	2118.13	2156.27	2178.13	2216.27	2238.13
ULTRACEMCO	1679.65	1655.15	1667.40	1677.25	1689.50	1699.35
WIPRO	560.40	544.23	552.32	558.88	566.97	573.53

**Pivot Point:** Intra-day trading tool that applies stop loss based on NSE prices.

**Pivot Point:** This is a trigger point for intra-day buy/sell based on the price range of the previous day, based on NSE prices.

**R1**(Resistance 1): First resistance over pivot point; **R2** (Resistance 2): Second resistance over R1.

**S1** (Support 1): First support below pivot point; **S2** (Support 2): Second support below S1.

As per the tool, the trader should take a BUY position just above the pivot point; the stop loss should be kept at the pivot point and the first target would be R1. If R1 is crossed, then R2 becomes the next target with the stop loss at R1.

Similarly, if the price falls below the pivot point, the trader should SELL, keeping the pivot point as the stop loss and the first target as S1. If S1 is crossed, then S2 becomes the next target with the stop loss at S1.

**Legends:** BPP: Book part profits; BFP: Book full profits; AP: Average profits; EMA: Exponential moving average; SA: Simple average; RVS: Revised stop loss level.

## KARVY RESEARCH DESK – RETAIL BROKING

---

JK Jain

Head Research

---

### QUERIES & FEEDBACK

---

Toll-Free: 1800 425 8283

Email ID: [karvycalls@karvy.com](mailto:karvycalls@karvy.com)

---

#### Karvy Stock Broking Limited

“Karvy Centre”, Avenue-4, 2nd Floor, Road No: 10, Banjara Hills, Hyderabad – 500 034. India.

Tel: 91-40-23312454; Fax: 91-40-23311968

#### Disclaimer:

The views represented here are based purely on Technical studies/analysis and can be at odds with our Fundamental views/analysis.

The information and views expressed and presented in this report are prepared by Karvy Stock Broking Limited (Karvy). The information contained herein is based on our analysis and up on sources that we consider reliable. We, however, do not vouch for the accuracy or the completeness thereof. This material is for personal information only and we are not responsible for any loss incurred based upon any action/trade(s) there upon.

The investments discussed or recommended in this report may not be suitable for all investors. Investors must make their own investment decisions based on their specific investment objectives and financial position and using such independent advice, as they believe necessary. While acting upon any information or analysis mentioned in this report, investors may please note that neither Karvy nor any person connected with any associated companies of Karvy accepts any liability arising from the use of this information and views mentioned in this document.

The author, directors and other employees of Karvy and its affiliates may hold long or short positions in the above-mentioned companies from time to time. Every employee of Karvy and its associated companies are required to disclose their individual stock holdings and details of trades, if any, that they undertake. The team rendering corporate analysis and investment recommendations are restricted in purchasing/selling of shares or other securities till such a time this recommendation has either been displayed or has been forwarded to clients of Karvy. All employees are further restricted to place orders only through Karvy Stock Broking Ltd. The report is intended for a restricted audience and we are not soliciting any action based on it. Neither the information nor any opinion expressed herein constitutes an offer or an invitation to make an offer, to buy or sell any securities, or any options, futures nor other derivatives related to such securities.

Karvy Stock Broking Ltd. does and seeks to do business with companies covered in its research reports. As a result, investors should be aware that the firm may have a conflict of interest that could affect the objectivity of this report. Investors should consider this report as only a single factor in making their investment decision.